



INDOFINE Chemical Company, Inc.

121 Stryker Lane, Bldg. 30, Suite 1 • Hillsborough, NJ 08844 • U.S.A.

Phone: (908) 359-6778 • FAX: (908) 359-1179

website: www.indofinechemical.com

e-mail: chemical@indofinechemical.com

CERTIFICATE OF ANALYSIS

Catalog Number: 06-1382

Product Name: **2,6-DICHLOROINDOPHENOL SODIUM SALT DIHYDRATE**

CAS Number: [620-45-1]

Lot Number: 1509679

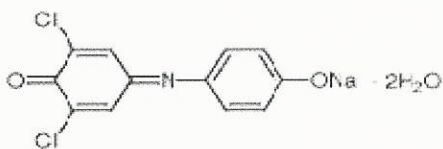
Chemical Formula: $C_{12}H_6Cl_2NNaO_2 \cdot 2H_2O$

Molecular Weight: 326.11

Appearance: Dark green powder

Storage: Store in a cool, dry place

Purity(HPLC): 98.42%





INDOFINE Chemical Company, Inc.

121 Stryker Lane, Bldg. 30, Suite 1 • Hillsborough, NJ 08844 • U.S.A.

Phone: (908) 359-6778 • FAX: (908) 359-1179

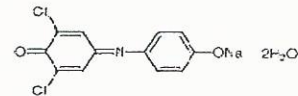
website: www.indofinechemical.com

e-mail: chemical@indofinechemical.com

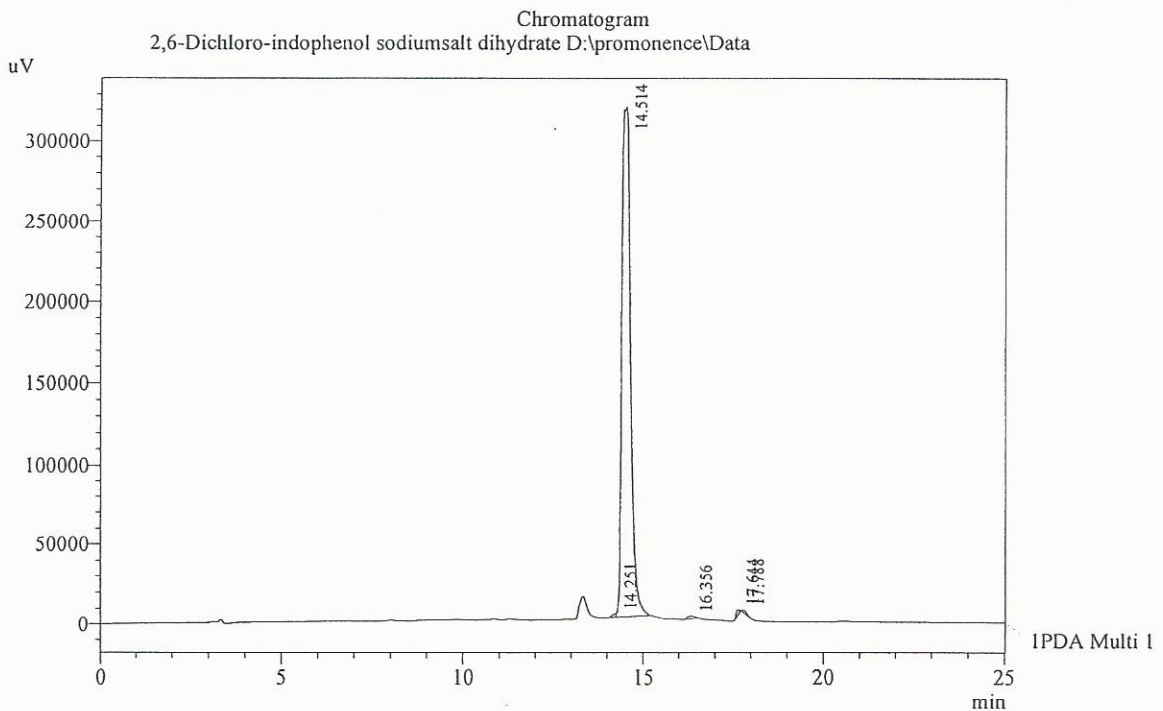
HPLC ANALYSIS

Sample ID	: BBML(Unit-II)	Catalog No.:	06-1382
Injection Volume	: 20 uL	Product Name:	2,6-Dichloroindophenol sodium salt dihydrate
Data Filename	: 210815G.lcd	Lot No.:	1509679
Method Filename	: Linear Gradient.M.lcm		

Column	: LUNA C-18, (250mm x4.6mm 5.0μ)
Flow	: 1.000 mL/min.
Mobile Phase	: A(0.05% TFA in Water) B(Acetonitrile)
	0.01 90 10
	12.0 10 90
	20.0 10 90
	23.0 90 10
	25.0 90 10



Diluent : Acetonitrile



I PDA Multi 1 / 254nm 4nm

PeakTable

PDA Ch1 254nm 4nm

Peak#	Name	Ret. Time	Area	Area %	Relative Retention Time
1	RT:14.251	14.251	19769	0.36	0.98
2	2,6-DiCl-indophenol	14.514	5338708	98.42	1.00
3	RT:16.356	16.356	27244	0.50	1.13
4	RT:17.644	17.644	24468	0.45	1.22
5	RT:17.788	17.788	14212	0.26	1.23
Total			5424402	100.00	